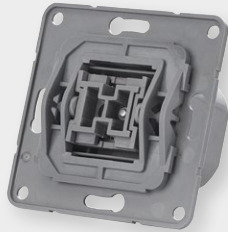


Shutter Switch ET Shutter Zigbee



The ET Shutter Zigbee is a smart roller shutter switch that integrates seamlessly into Zigbee-based smart home systems. Compatible with the Zigbee Home Automation Profile 3.0, it can be reliably and efficiently controlled as an HVAC-capable end device.

Whether in the morning when you wake up, as an automatic sunshade in the afternoon, or for darkening in the evening – the ET Shutter adapts flexibly to your daily routine. The ET Shutter Zigbee is compatible with the proprietary ET Gateway Home Link but can also be easily integrated into other Zigbee gateways.

Technical data

Supply voltage:	230 V/ 50 Hz
Dimensions (WxHxD):	70 x 70 x 42 mm
Weight:	55 g
Color:	Gray
Installation:	Removable rockers and switches for Busch-Jaeger, Gira, Merten
Protection class:	IP20
Area of application:	Indoor
Scope of delivery:	ET Shutter Zigbee, operating instructions, removable rockers and switches for Busch-Jaeger, Gira, Merten
Max. power consumption in standby mode:	0.2 W
Type of cable:	rigid and flexible
Type:	Roller shutter actuator
Wire cross-section:	0.2-1.5 mm ²
Temperature range:	0 to 50 °C
Maximum switching capacity:	500 W
Relay type:	closer

Radio technology

Communication:	Zigbee
Frequency range:	2.4 GHz
Duty-Cycle:	1%/h
Type Radio transmission power:	+8 dBm

Functions

- Schedules and scenes can be set up individually
- The roller shutters can be controlled manually at any time using the switch
- The current status of the roller shutter (open, closed, in motion) is visible in the app
- The end positions of the roller shutters can be detected automatically and configured manually
- It is possible to move to a percentage position (e.g., 50% open) – ideal for privacy and sun protection
- The ET Shutter can be integrated into voice assistants such as Alexa*
- Remote control is also possible

*only for models with integrated Zig-Bee hub